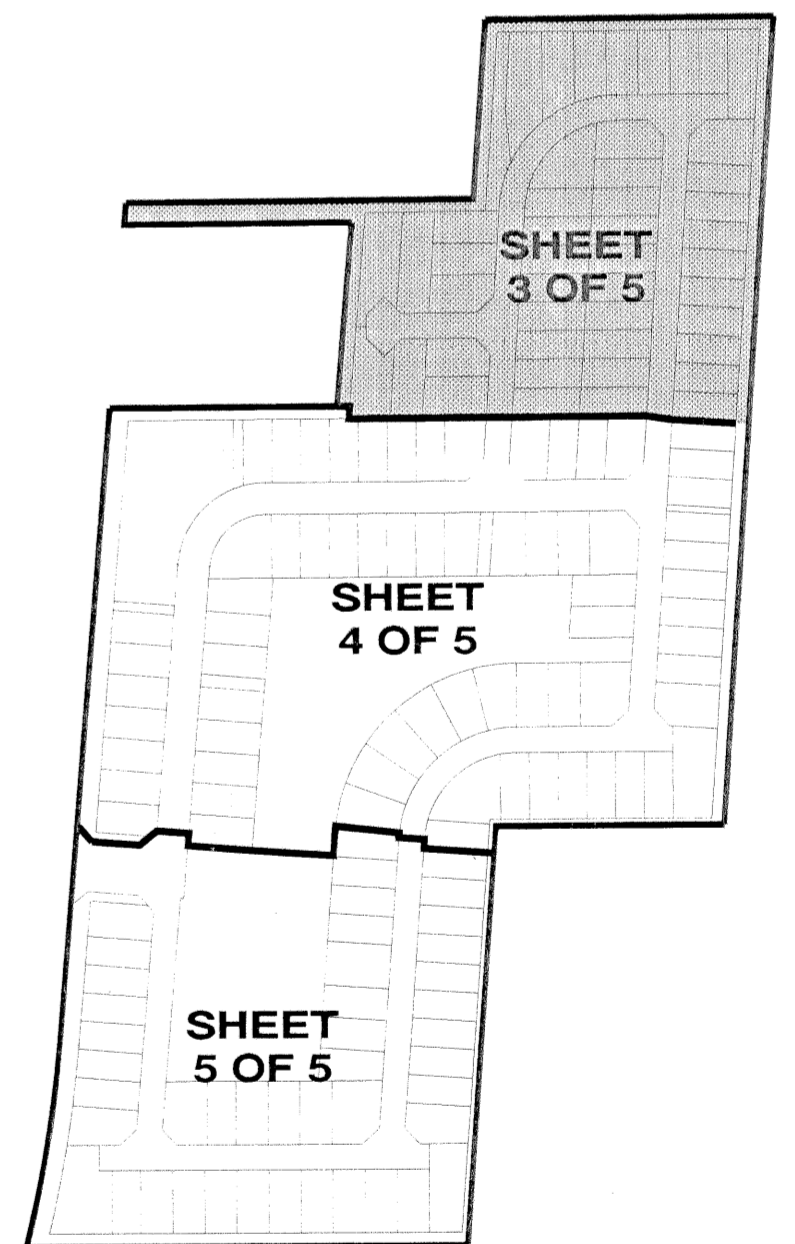
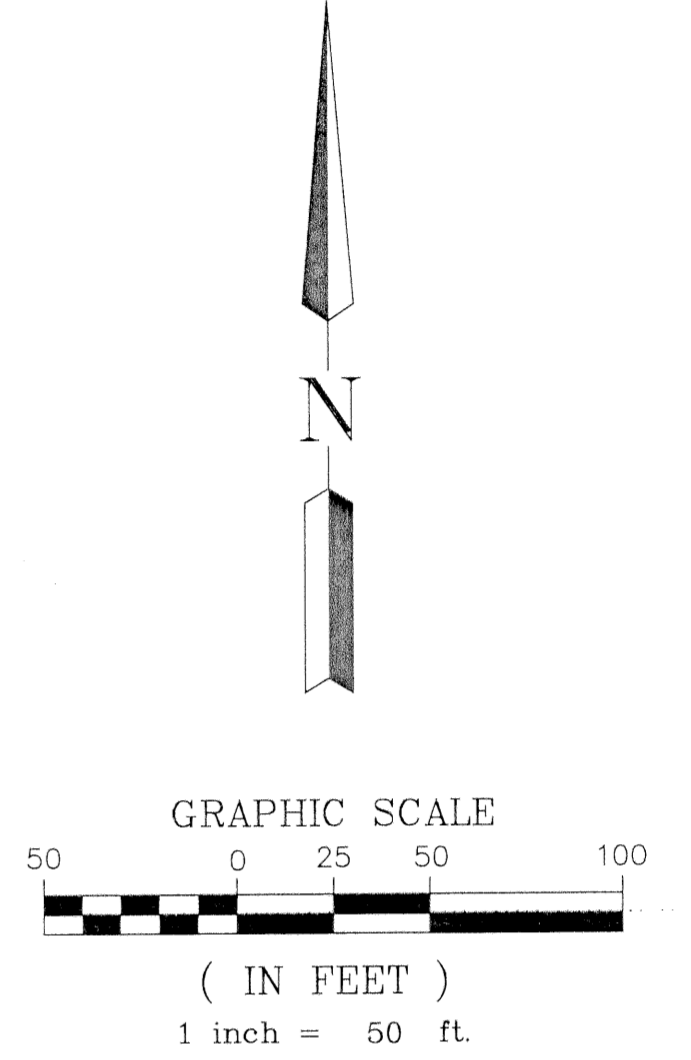
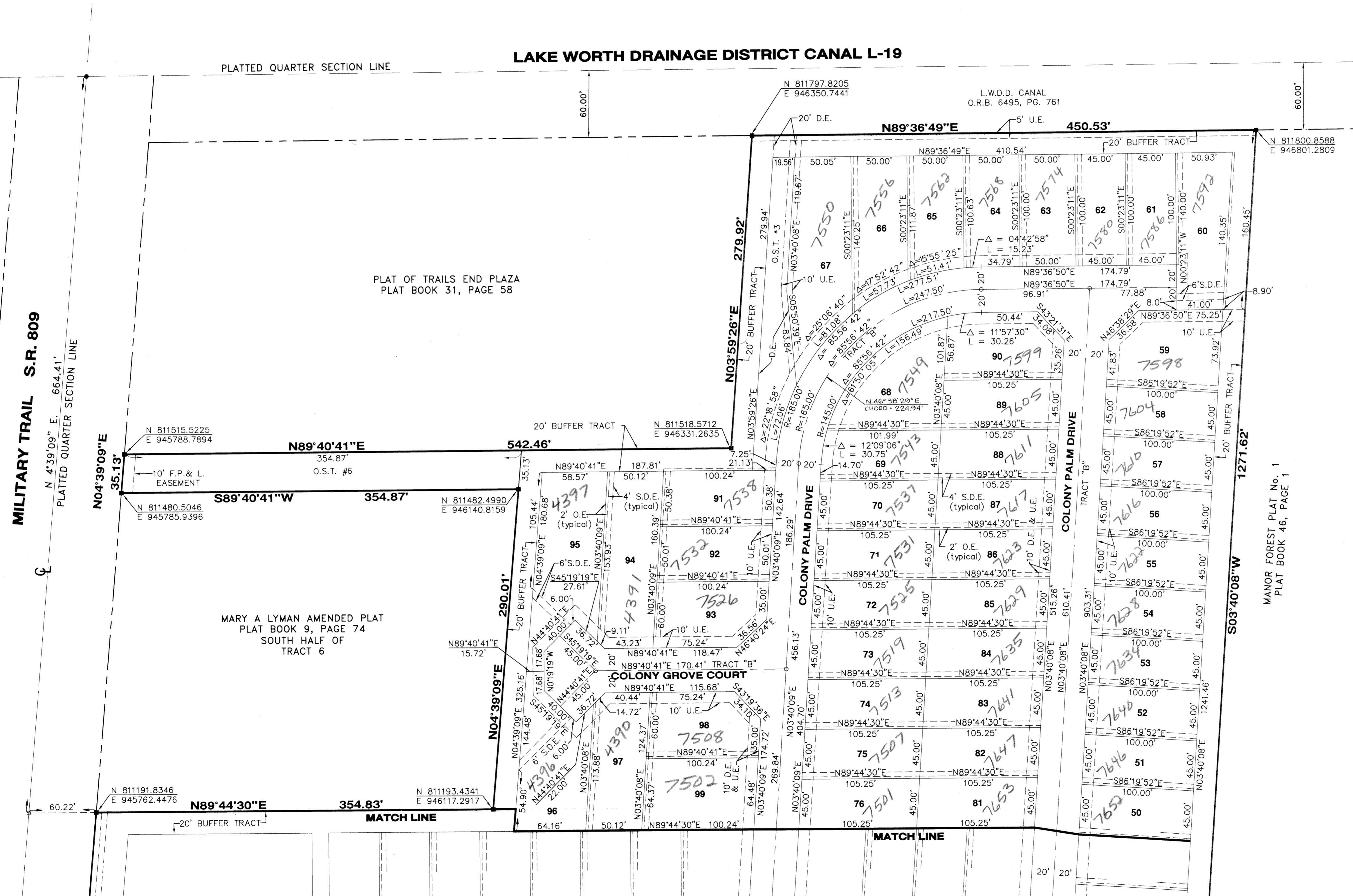


COLONY AT BOYNTON BEACH

A PLANNED UNIT DEVELOPMENT

BEING A REPLAT OF PORTIONS OF TRACTS 5, 6, 7 & 14,
SOUTHEAST QUARTER (SE 1/4) OF THE
MARY A. LYMAN ET AL AMENDED PLAT OF
SECTION 12, TOWNSHIP 45 SOUTH, RANGE 42 EAST
AS RECORDED IN PLAT BOOK 9, PAGE 74,
PUBLIC RECORDS OF
PALM BEACH COUNTY, FLORIDA



SHEET INDEX

LAND SURVEYOR'S NOTE:
 Coordinates shown are grid
 Datum = NAD 83, 1990 Adjustment
 Zone = Florida East
 Linear unit = US Survey Foot
 Coordinate system 1983 State Plane Transverse Mercator
 Projection
 All distances are ground
 Scale Factor = 1.0003822
 Ground distance x scale factor = grid distance

■ = PERMANENT REFERENCE MONUMENT (P.R.M.),
 STAMPED: "PRM ADAIR & BRADY RLS 3542"
 ○ = PERMANENT CONTROL POINT (P.C.P.),
 STAMPED: "PRM ADAIR & BRADY RLS 3542"

SUBDIVISION: Colony at Boynton Beach
 BOOK: 88
 FLOOD ZONE: B
 QUAD: 34
 SE: 9/16-71
 TAZ: 415
 FUD NAME: The Colony

ADAIR & BRADY, INC. CONSULTING ENGINEERS & LAND SURVEYORS 1958 South Congress Avenue West Palm Beach, Florida 33406 (561) 964-1221		COLONY AT BOYNTON BEACH	
Dr. T.C.M.F.B.	Scale: 1" = 50'	FP1849E	SHEET 3 OF 5
Ck. D.P. Pg.	Date: AUGUST, 1998		
Ap. D.P.	Job. No. 96022		

- LEGEND**
- S.D.E. = SWALE DRAINAGE EASEMENT
 - U.E. = UTILITY EASEMENT
 - D.E. = DRAINAGE EASEMENT
 - O.S.T. = OPEN SPACE TRACT
 - O.E. = OVERHANG EASEMENT